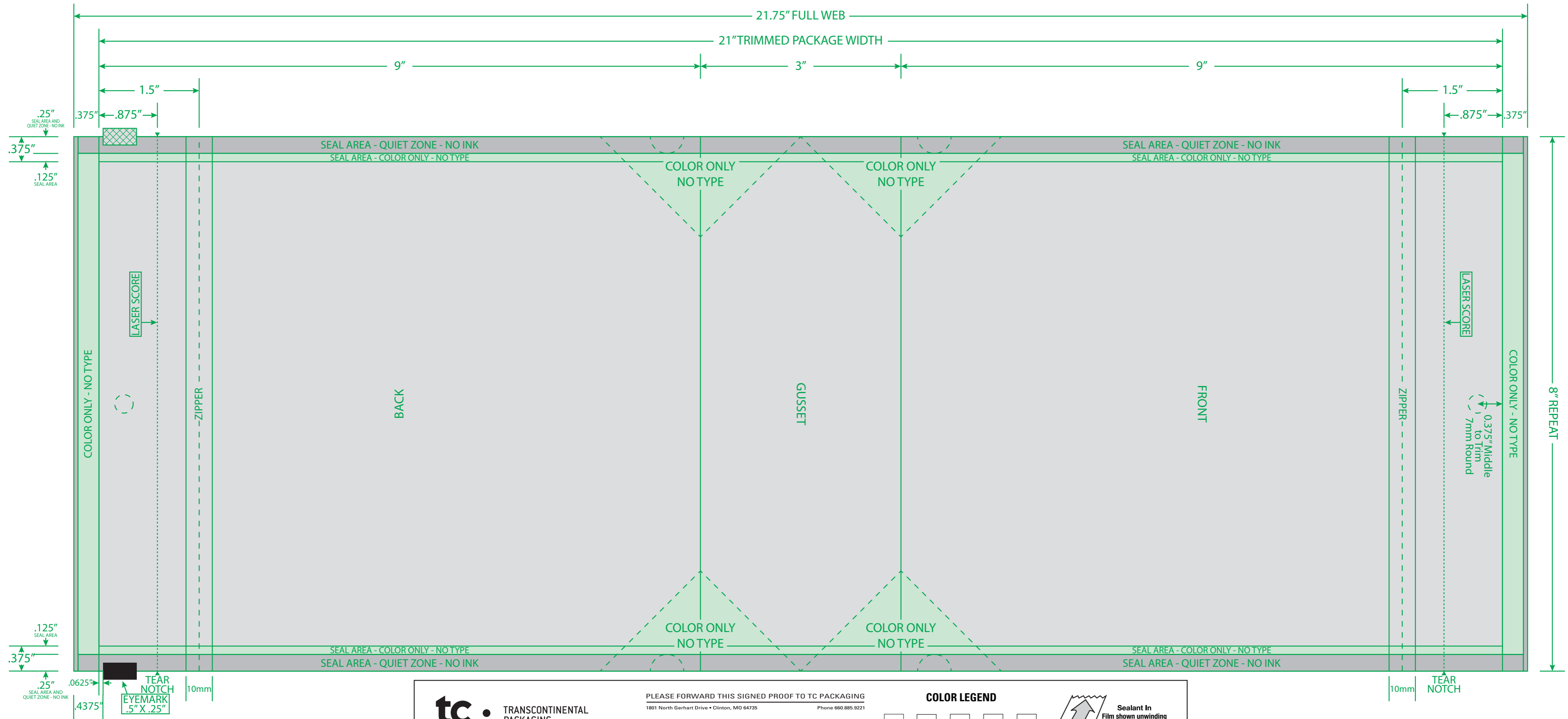



PDL0007V3 - 21.75" Web Width x 8" Repeat (Pouch Size 9" Tall x 8" Wide)





TRANSCONTINENTAL PACKAGING

PLEASE REVIEW THIS PROOF for copy, content, dimensional layout, color break, bar code, metallic areas (if applicable), etc. Your signature confirms and approves accuracy of the graphics and all information. Transcontinental Packaging will not be responsible for any errors or omissions after this proof is approved with your signature.

LIMITATION OF LIABILITY: This proof must be thoroughly inspected upon receipt of the same. It is the responsibility of the recipient to examine all proofs, films, engravings and plates prior to approval and printing. If errors are found on this proof, please contact our Customer Service Department. The liability of TC Packaging, shall be limited to correcting or replacing it's own product. TC Packaging will not be liable for any other loss or damage including but not limited to the cost of proofs, negatives, engravings, printing plates or cylinders, overtime, press delays or downtime, and/or missing insertion dates.

PLEASE FORWARD THIS SIGNED PROOF TO TC PACKAGING
1801 North Gerhart Drive • Clinton, MO 64735 Phone 660.885.9221

JOB NO: PDL0007V3 R1: R2:
DATE: 10/19/2021 R3: R4:

APPROVED AS SHOWN APPROVED WITH CHANGES NOTED
 NOT APPROVED, REVISE AND RESUBMIT

APPROVAL SIGNATURE: _____ DATE: _____


PLEASE CHECK APPROPRIATE BOX, SIGN THEN SEND BACK TO TC CAPRI

COLOR LEGEND

COLOR 1	COLOR 2	COLOR 3	COLOR 4	COLOR 5
COLOR 6	COLOR 7	COLOR 8	COLOR 9	COLOR 10

THESE COLORS ARE SIMULATED FOR THIS PROOF ONLY. PLEASE REFER TO A PANTONE® COLOR GUIDE FOR ACCURATE COLOR REPRESENTATION.

CLEAR FILM	NO INK	COLOR ONLY NO TYPE	DIE COLOR
------------	--------	--------------------	-----------



Sealant In
Film shown unwinding away from you.

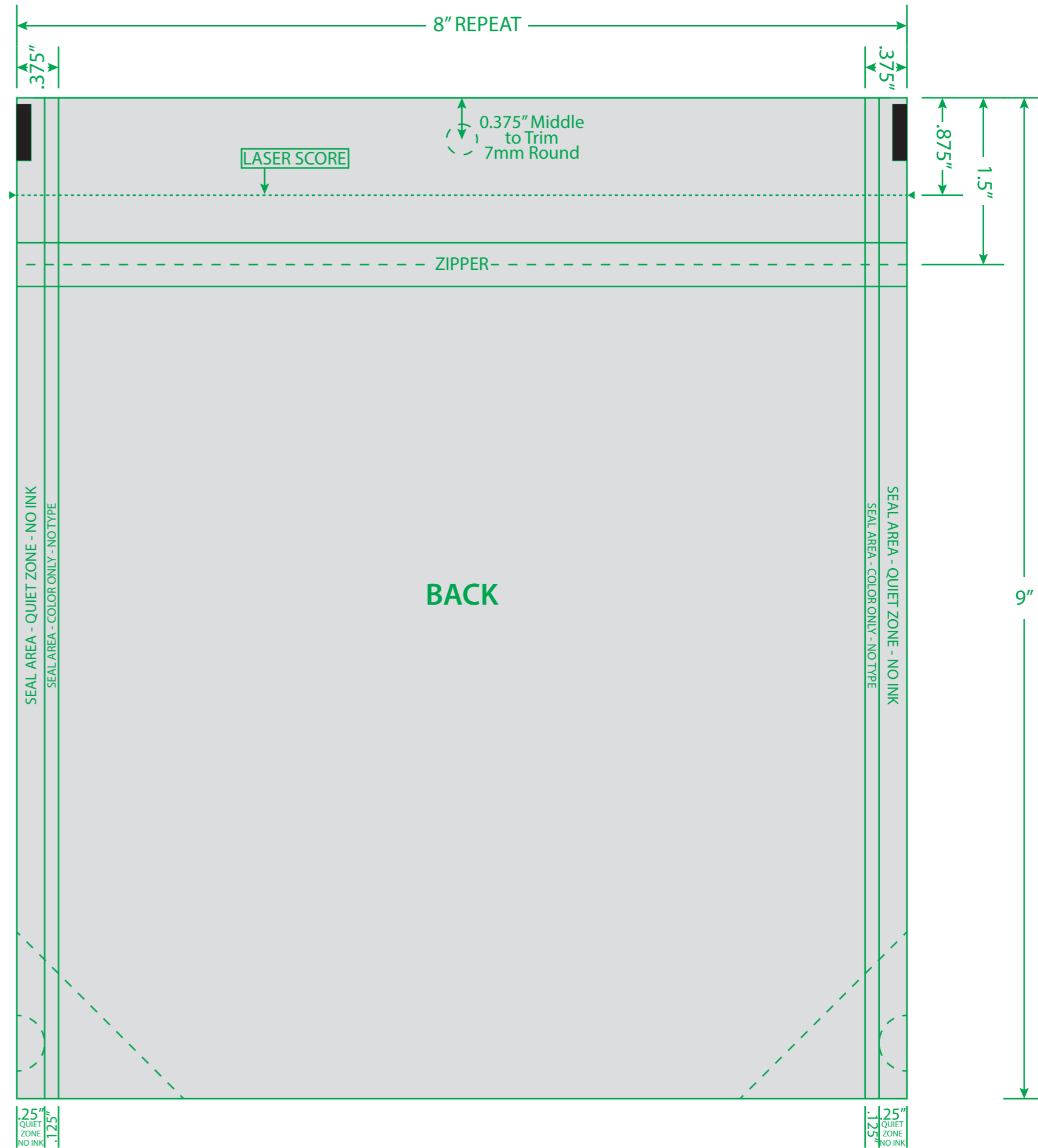
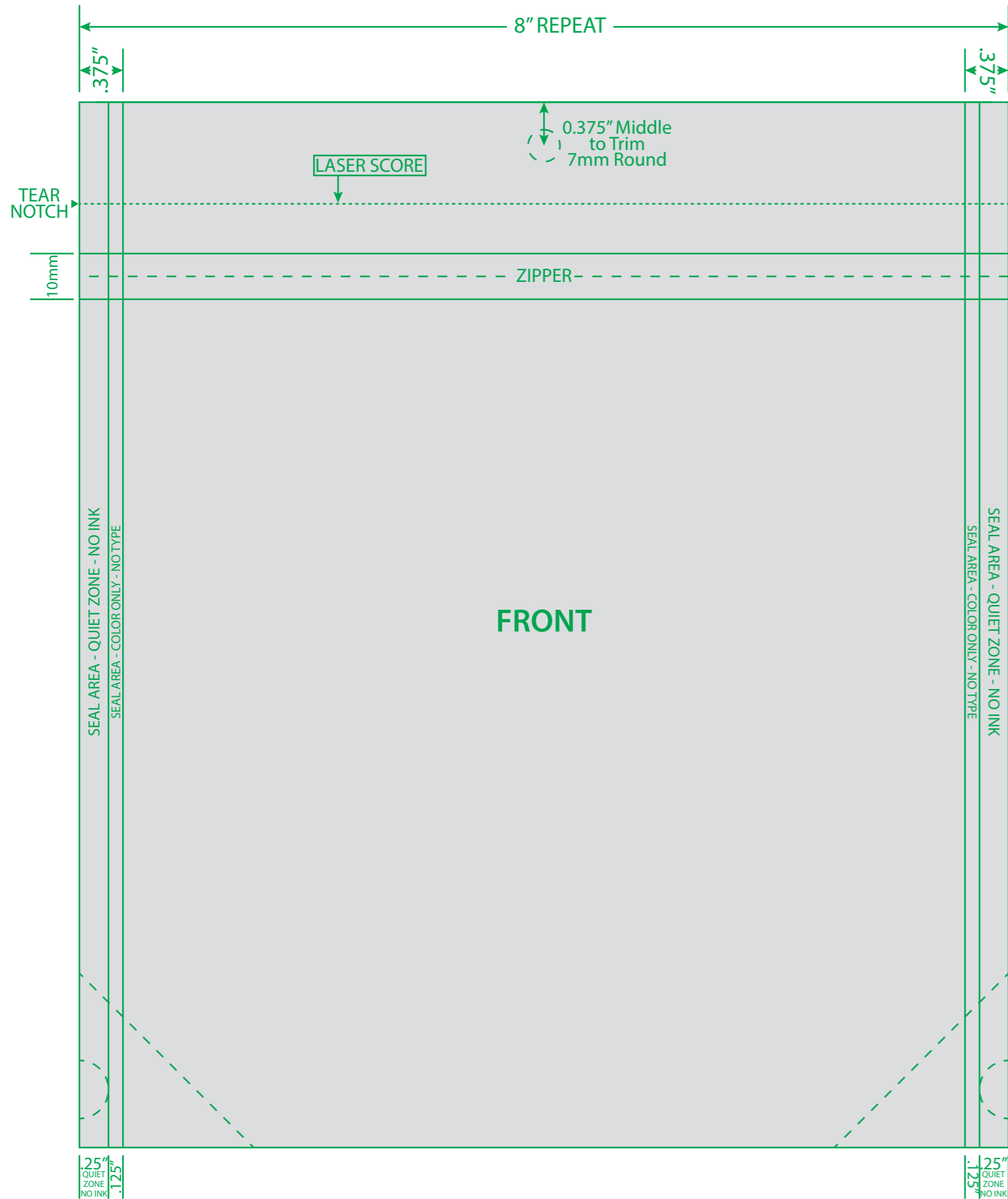
REWIND #X

XXXXX PRINTS
on XXX film laminates to XXX film

STEPPING — X ACROSS / 4 AROUND

PDL0007V3 - 21.75" Web Width x 8" Repeat (Pouch Size 9" Tall x 8" Wide)

Finished Package Size



PLEASE FORWARD THIS SIGNED PROOF TO TC PACKAGING

1801 North Gerhart Drive • Clinton, MO 64735 Phone 660.885.9221

JOB NO: PDL0007V3 R1: R2:
 DATE: 10/19/2021 R3: R4:

APPROVED AS SHOWN APPROVED WITH CHANGES NOTED
 NOT APPROVED, REVISE AND RESUBMIT

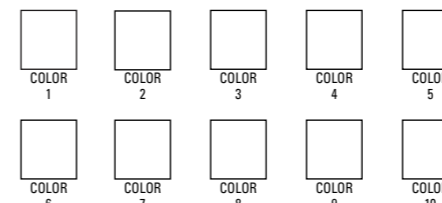
APPROVAL SIGNATURE: DATE:

PLEASE CHECK APPROPRIATE BOX, SIGN THEN SEND BACK TO TC CAPRI

PLEASE REVIEW THIS PROOF for copy, content, dimensional layout, color break, bar code, metallic areas (if applicable), etc. Your signature confirms and approves accuracy of the graphics and all information. Transcontinental Packaging will not be responsible for any errors or omissions after this proof is approved with your signature.

LIMITATION OF LIABILITY: This proof must be thoroughly inspected upon receipt of the same. It is the responsibility of the recipient to examine all proofs, films, engravings and plates prior to approval and printing. If errors are found on this proof, please contact our Customer Service Department. The liability of TC Packaging shall be limited to correcting or replacing it's own product. TC Packaging will not be liable for any other loss or damage including but not limited to the cost of proofs, negatives, engravings, printing plates or cylinders, overtime, press delays or downtime, and/or missing insertion dates.

COLOR LEGEND



THESE COLORS ARE SIMULATED FOR THIS PROOF ONLY. PLEASE REFER TO A PANTONE® COLOR GUIDE FOR ACCURATE COLOR REPRESENTATION.

CLEAR FILM DIE COLOR



Sealant In Film shown unwinding away from you.

REWIND #X

XXXXX PRINTS

on XXX film laminates to XXX film

STEPPING – X ACROSS / 2 AROUND